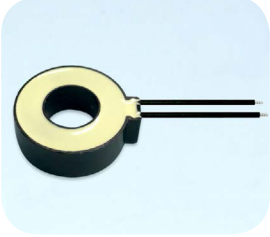
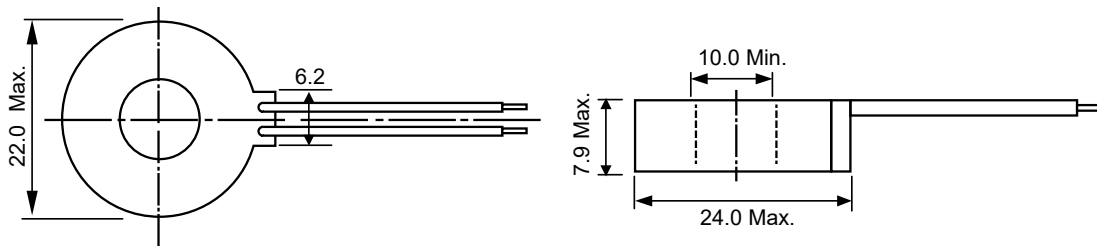


SPECIFICATION

	Zero Phase Current Transformer
	Model No ; SH12
	Type ; Standard Type

DIMENSION

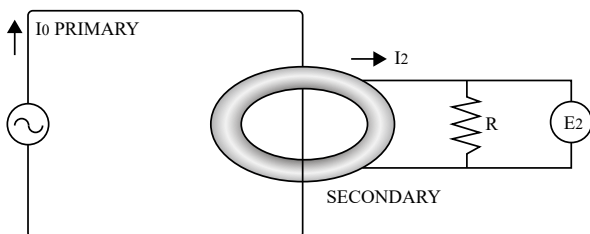


CHARACTERISTICS

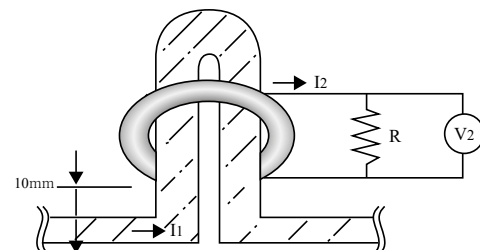
ITEM	PROPERTY	CONDITION
OUTPUT	$E : 17\sim 21\text{mV}$	$I_0:25\text{mA}$ $R:1\text{k}\Omega$ $f:60\text{Hz}$
REMANENCE MAGNETISM	$\tau : 10\% \text{ max.}$	Primary input DC 10A.
THERMAL PROPERTY	$\tau : \pm 10\% \text{ max.}$	$-20\sim 80^\circ\text{C}$ output voltage ratio
PERMISSIBLE UNBALANCE	$V_2 : 10\text{mV} \text{ max.}$	$I_1:600\text{A}$ $R:500\Omega$ RMS value when rotate 360°

TEST DIAGRAM

<OUT PUT>



<PERMISSIBLE UNBALANCE>



주식회사 성한트랜스텍 34, Yeonso-ro 9-gil, Eunpyeong-gu, Seoul, Korea
 SUNGHAN TRANSTEK CO.,LTD T. 02-352-8414 / E-mail : sunghan@transtek.co.kr