
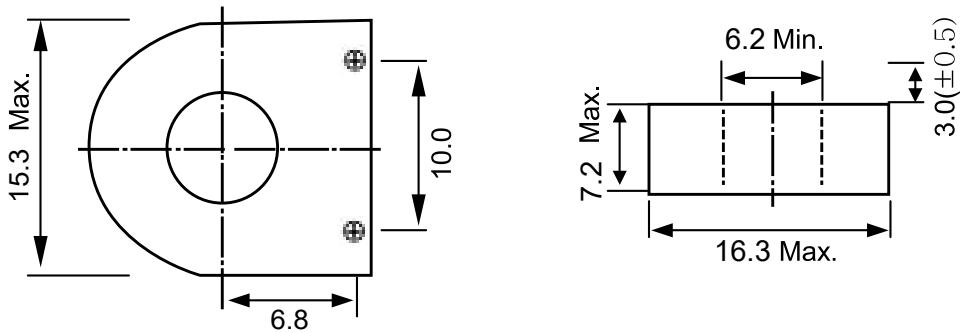


SPECIFICATION

	Zero Phase Current Transformer
	Model No ; SH6.5P
	Type ; Standard Type

DIMENSION

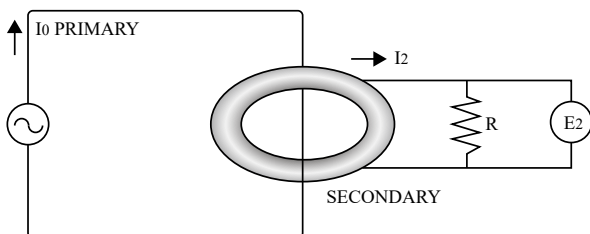


CHARACTERISTICS

ITEM	PROPERTY	CONDITION
OUTPUT	$E : 10.5 \pm 1\text{mV}$	$I_0:12\text{mV}$ $R:1\text{k}\Omega$ $f:50/60\text{Hz}$
REMANENCE MAGNETISM	$\tau : 10\% \text{ max.}$	Primary input DC 10A.
THERMAL PROPERTY	$\tau : \pm 10\% \text{ max.}$	$-20 \sim 80^\circ\text{C}$ output voltage ratio
PERMISSIBLE UNBALANCE	$V_2 : 10\text{mV} \text{ max.}$	$I_1:180\text{A}$ $R:1\text{k}\Omega$ RMS value when rotate 360°

TEST DIAGRAM

<OUT PUT>



<PERMISSIBLE UNBALANCE>

